

HMCT11KA2

HUSQVARNA RECOMMENDS



 Husqvarna

2011
SPECIAL
PARTS



Husqvarna®



► **SPECIALPARTS**

Husqvarna dal 1903 racconta una storia di successi, campioni, vittorie con ben 78 titoli iridati conquistati. Perché Husqvarna è vincente, Husqvarna è passione, Husqvarna è pura adrenalina. Per chi ha la competizione nel sangue, per chi vuole la massima performance dalla propria moto, per chi non è mai sazio di emozioni. Husqvarna propone una vasta gamma di accessori racing, nati dall'esperienza del reparto corse e realizzati con materiali tecnici e leggeri come titanio e carbonio. La gamma di parti speciali racing vi permetterà di personalizzare ed esaltare al massimo le caratteristiche delle moto Husqvarna, geneticamente concepite per vincere.

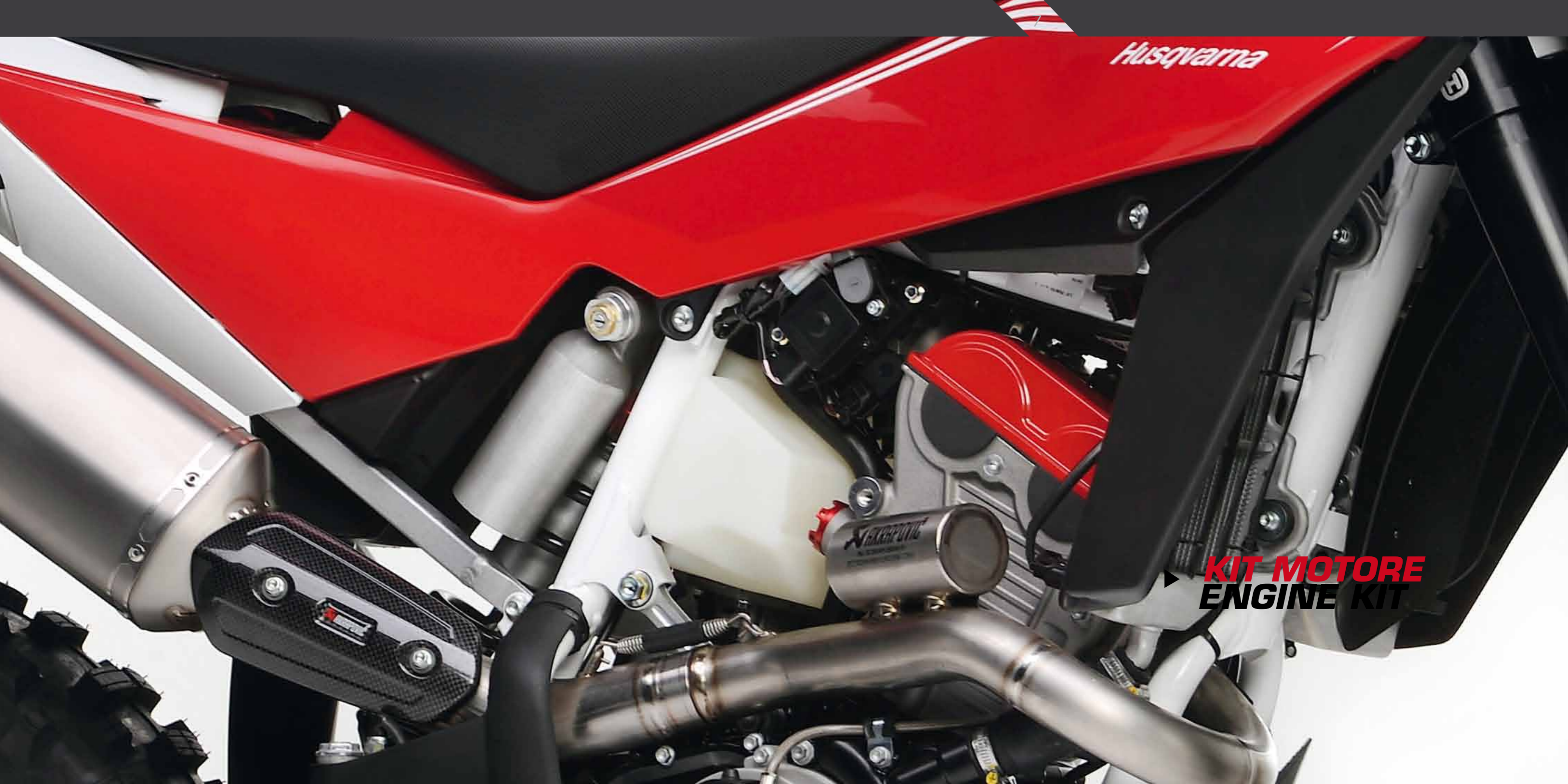
Husqvarna from 1903 tells a history of success, champions, victories with 78 world titles collected that's because Husqvarna is a winner, Husqvarna is passion. Husqvarna is pure adrenaline. When competition runs through the veins, when you require the maximum performance from your own bike and emotions are never enough, Husqvarna offers you a wide range of racing accessories, born from the experience of the racing department and implemented using strong and ultra light materials as titanium and carbon fibre. The range of special racing parts will allow you to customize and maximally improve the characteristics of Husqvarna bikes, genetically designed to win.

KITINDEX

- ▶ KIT MOTORE
ENGINE KIT 07_15
- ▶ SISTEMI DI SCARICO
EXHAUST SYSTEM 17_27
- ▶ KIT CICLISTICA
CHASSIS KIT 29_53
- ▶ KIT CARBONIO
CARBON KIT 55_59
- ▶ ACCESSORI
ACCESSORIES 61_65

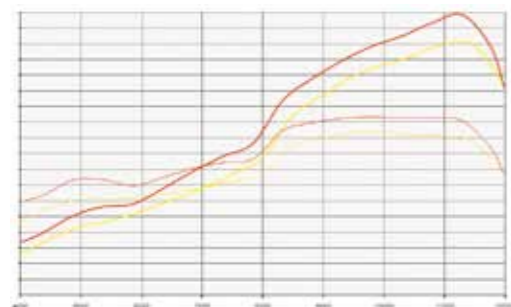


▶ **PER CHI NON È MAI SAZIO DI EMOZIONI.**
FOR THOSE WHO ARE NEVER FULL OF EMOTIONS.



Husqvarna

KIT MOTORE
ENGINE KIT



— Std
— + Kit

WR/CR 125
COD. 8000H2995

► Kit motore 144cc WR/CR 125
Engine Kit 144cc WR/CR 125

CROSS ENDURO MY 08/09/10/11



TE450
COD. 8000H0446*

► Kit potenziamento TE 450 con silenziatore in alluminio
Power kit TE 450 with aluminium silencer

*Kit montabile esclusivamente con codice 8000H1236
Install this kit only with P/N 8000H1236

ENDURO MY 09/10

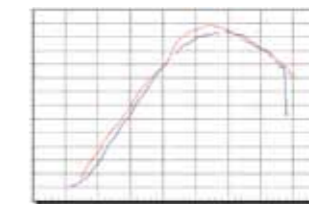


TE450
COD. 8000H1258*

► Kit potenziamento TE 450 con scarico completo in titanio
Power kit TE 450 with full titanium exhaust system

*Kit montabile esclusivamente con codice 8000H1236
Install this kit only with P/N 8000H1236

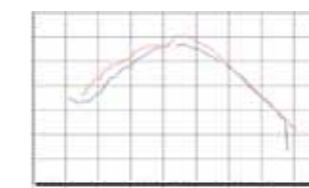
ENDURO MY 09/10



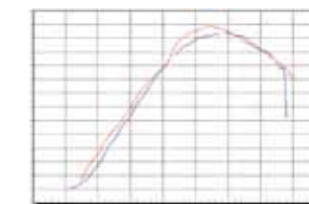
► Potenza/Power

— Std
— + Kit

► - 0,7 kg da STD
- 0,7 kg from STD
Omologato Enduro FIM
Valid for enduro regulation



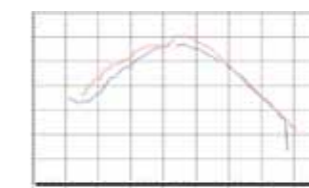
► Coppia/Torque



► Potenza/Power

— Std
— + Kit

► - 1 kg da STD
- 1 kg from STD
Omologato Enduro FIM
Valid for Enduro regulation



► Coppia/Torque



TE510
COD. 8000H0447*

- ▶ Kit potenziamento TE 510 con silenziatore in alluminio
Power kit TE 510 with aluminium silencer

*Kit montabile esclusivamente con codice 8000H1236
Install this kit only with P/N 8000H1236

ENDURO

MY 09/10



TE510
COD. 8000H1259*

- ▶ Kit potenziamento TE 510 con scarico completo in titanio
Power kit TE 510 with full titanium exhaust system

*Kit montabile esclusivamente con codice 8000H1236
Install this kit only with P/N 8000H1236

ENDURO

MY 09/10



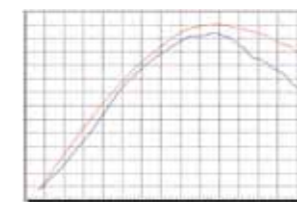
TC/TXC450
COD. 8000H1083*

- ▶ Kit potenziamento TC 450
Power kit TC 450

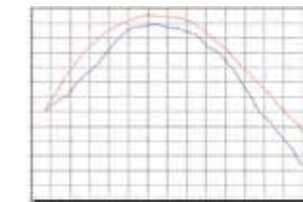
*Kit montabile esclusivamente con codice 8000H1236
Install this kit only with P/N 8000H1236

CROSS

MY 07/08/09/10



▶ Potenza/Power



▶ Coppia/Torque

— Std
— + Kit

TC/TXC510
COD. 8000H1084*

- ▶ Kit potenziamento TC/TXC 510
Power kit TC/TXC 510

*Kit montabile esclusivamente con codice 8000H1236
Install this kit only with P/N 8000H1236

CROSS

MY 07/08/09: TC
MY 07/08/09/10: TXC



KIT MOTORE**TC450→SMRR450**
COD. 8000H1087

- Kit conversione motore da TC 450 a SMRR 450
Engine conversion kit from TC 450 to SMRR 450

CROSS MOTARD

MY 07/08/09/10

**TC510→SMRR510**
COD. 8000H1088

- Kit conversione motore da TC 510 a SMRR 510
(da abbinare con 8000B1750 per SMRR 530)
Engine conversion kit from TC 510 to SMRR 510
(to combine with 8000B1750 for SMRR 530)

CROSS MOTARD

MY 07/08/09/10

TE250→310
COD. 8000H1111

- Kit conversione motore da TE 250 a TE 310
Engine conversion kit from TE 250 to TE 310

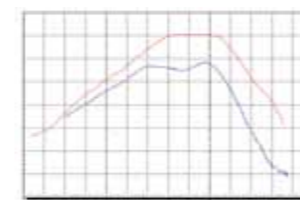
ENDURO

MY 09

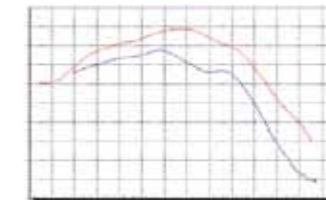
**WR 250→300**
COD. 8000H0915

- Kit conversione motore da WR250 a WR300
Engine conversion kit from WR250 to WR300

ENDURO

MY 01/02/03/04/05/06/
07/08/09/10

► Potenza/Power



► Coppia/Torque

— WR250
— WR300

ENGINE KIT

KIT MOTORE

TC/TXC/TE/SMR450-510/SMRR530
COD. 8000B1563 MY 08/09/10
COD. 8000A7820 fino a/up to MY 07

- ▶ Frizione antisaltellamento per 450-510
 Anti hopping clutch for 450-510

MOTARD



COD. 8000A8190*

- ▶ Chiave per frizione antisaltellamento
 Anti hopping clutch key
 *Utilizzabile solo con codice 8000B1563 e 8000A7820
 Only with P/N 8000B1563 and 8000A7820



TE/SMR
COD. 8000H0590*

- ▶ Pulsante doppia modalità per moto ad iniezione
 Double map switch for injection bikes
 *Esclusi TE 610 - Excluded TE 610

ENDURO MOTARD MY 09/10



Temperatura acqua -5° C da STD
 Water temperature -5° C from STD
 Temperatura olio -7 C° da STD
 Oil temperature -7 C° from STD

TC/TXC/TE/SMR/SMRR
COD. 8000H2449*

- ▶ Girante e corpo pompa acqua racing
 Racing rotor and body water pump
 *Esclusi TE/TC/TXC 250 MY 10
 Excluded TE/TC/TXC 250 MY 10

CROSS ENDURO MOTARD MY 08/09/10



TC/TXC/TE/SMR
COD. 8000H1305*

- ▶ Kit raffreddamento per radiatori con tappo argento
 Cooling kit for silver cap radiator

COD. 8000H1309*

- ▶ Kit raffreddamento per radiatori con tappo nero
 Cooling kit for black cap radiator
 *Applicabile anche a MY 10 solo se abbinato a codice 8000A0671
 Apply on MY 10 combined with P/N 8000A0671

CROSS ENDURO MOTARD MY 08/09



TC/TXC/TE/SMR
COD. 8000H0450*

- ▶ Kit modifica tenditore catena per alloggiamento ø 22 mm
 Da utilizzare solo con albero a camme racing
 Chain tensioner kit for housing ø 22 mm
 Needs to be used with racing camshaft only
 *Esclusi TE/TC/TXC 250 MY 10
 Excluded TE/TC/TXC 250 MY 10

CROSS ENDURO MOTARD MY 05/06/07/08/09/10

ENGINE KIT



► **SISTEMA DI SCARICO**
EXHAUST SYSTEM

SISTEMA DI SCARICO



WRE/SMS125 COD. 8000B0642

- ▶ Kit scarico piena potenza WRE/SMS 125 con Kit getti
Exhaust system full power WRE/SMS 125 with jet Kit

DUAL

MY 07/08/09/10



WRE/SMS125 COD. 8000H2139

- ▶ Kit scarico WRE/SMS 125 con Kit getti
Exhaust system WRE/SMS 125 with jet Kit

DUAL

MY 07/08/09/10



WR250 COD. 8000A9973

- ▶ Tubo scarico kit WR 250
Exhaust system kit WR 250

DUAL

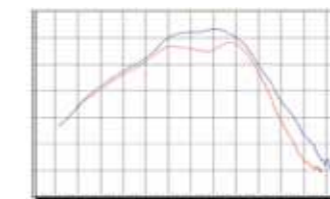
MY 00/01/02/03/04
05/06/07/08/09/10/11

WRE/SMS125 COD. 8000B0054

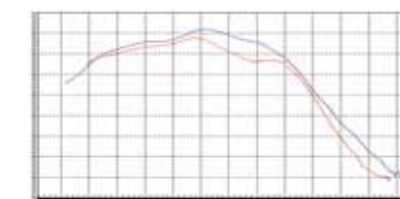
- ▶ Kit scarico WRE/SMS 125
Exhaust system WRE/SMS 125

DUAL

MY 04/05/06



▶ Potenza/Power



▶ Coppia/Torque

— Std
— + Kit

EXHAUST SYSTEM

SISTEMA DI SCARICO



TC250 COD. 8000H3984

- ▶ Kit per TC 250 con scarico completo in titanio
Exhaust system kit TC 250 full titanium

CROSS MY 09/10

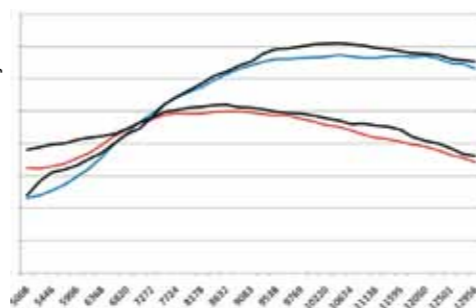


TXC/TE250 COD. 8000H2465

- ▶ Kit per TE 250 con scarico completo in titanio
Exhaust system kit TE 250 full titanium
94Db

ENDURO MY 10/11

— Potenza/Power
— Coppia/Torque
— +Kit



- ▶ -1 kg da STD
-1 kg from STD



TE310 COD. 8000H6301

- ▶ Kit per TE 310 con scarico completo
Exhaust system kit for TE 310 Meo Replica
94Db

ENDURO MY 11



**EXHAUST
SYSTEM**


**TXC TE250/TE310
COD. 8000H2929**

- ▶ Kit scarico con silenziatore in titanio per TXC/TE250
Exhaust system kit with titanium silencer for TXC/TE250
94Db MY: 10/11

COD. 8000H6302

- ▶ Kit scarico con silenziatore in titanio per TE310
Exhaust system kit with titanium silencer for TE310
94Db

ENDURO MY 11

**TE250/310/450/510
COD. 8000H1240 per/for TE250*
COD. 8000H1245 per/for TE310
COD. 8000H1248 per/for TE450
COD. 8000H1253 per/for TE510**

- ▶ Kit scarico con silenziatore in alluminio
Exhaust system kit with aluminium silencer
94Db

*Solo per MY 09 / Only for MY 09

ENDURO MY 09/10

TE250/310/450/510
**COD. 8000H1299 per/for TE250*
COD. 8000H1300 per/for TE310
COD. 8000H1301 per/for TE450
COD. 8000H1302 per/for TE510**

- ▶ Kit scarico con silenziatore in titanio
Exhaust system kit with titanium silencer
94Db

*Solo per MY 09 / Only for MY 09

ENDURO MY 09/10

**TE250/310/450/510
COD. 8000H1242 per/for TE250*
COD. 8000H1247 per/for TE310
COD. 8000H1250 per/for TE450
COD. 8000H1255 per/for TE510**

- ▶ Kit con scarico completo in titanio
Exhaust system kit full titanium

*Solo per MY 09 / Only for MY 09

ENDURO MY 09/10

SISTEMA DI SCARICO

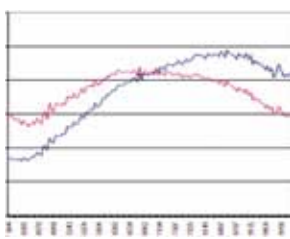


SMR450/510 COD. 8000H1413

- ▶ Kit doppio scarico titanio per SMR 450
Full titanium double exhaust system for SMR 450
- ▶ Kit doppio scarico titanio per SMR 510
Full titanium double exhaust system for SMR 510

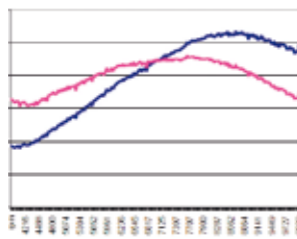
MOTARD

MY 09/10

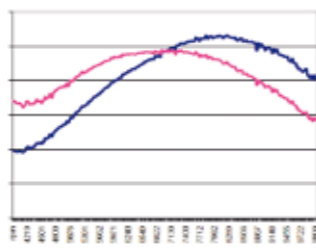


▶ Standard

COD. 8000H1413
▶ -1,5 kg

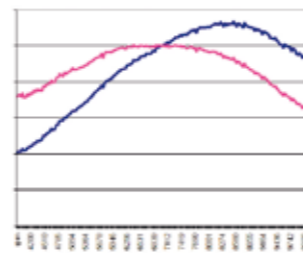


▶ Kit



▶ Standard

COD. 8000H1415
▶ -1,5 kg



▶ Kit



SMR450/510 COD. 8000H2142

- ▶ Kit doppio scarico titanio per SMR 450
Titanium double exhaust system for SMR 450
- ▶ Kit doppio scarico titanio per SMR 510
Titanium double exhaust system for SMR 510

MOTARD

MY 09/10

TE449/511 COD. 8000H5429

- ▶ Scarico Enduro Racing
Racing Exhaust System Enduro

ENDURO

MY 11



SMR449/511 COD. 8000H3185

- ▶ Impianto di scarico Racing in titanio
Complete titanium Racing exhaust

MOTARD

MY 11

EXHAUST SYSTEM

SISTEMA DI SCARICO

TE310/450/510

COD. 8000H2002 per/for TE310

COD. 8000H2003 per/for TE450

COD. 8000H2004 per/for TE510

- ▶ D.B. Killer corto
Short D.B. Killer

ENDURO MY 09/10



TE/SM610

COD. 8000B0060

- ▶ Silenziatore in titanio per TE/SM 610
Titanium silencer for TE/SM 610

DUAL MY 06/07/08/09

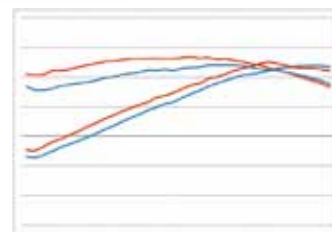


SM/TE630

COD. 8000H2469

- ▶ Kit doppio scarico titanio per SM/TE630
Titanium double exhaust system for SM/TE630

DUAL MOTARD MY 11



— Std
— + Kit ▶ -1,5 kg

TC450/510/SMRR450/530

COD. 8000H1085

- ▶ Centralina per TC 450/510 con limitatore 11000 (giri/min)
ECU for TC 450/510 rev. limit 11000 rpm

COD. 8000H1086

- ▶ Centralina per SMRR 450/530 con limitatore 11000 (giri/min)
ECU for SMRR 450/530 rev. limit 11000 rpm

CROSS MOTARD MY 07/08/09/10



**EXHAUST
SYSTEM**



▶ **KIT CICLISTICA**
CHASSIS KIT

KIT CICLISTICA



TC/TE/CR/WR

COD. 8000H1094*

- ▶ Piastre di sterzo per TC/TE/CR/WR (200 mm/offset =20 mm)
Tripleclamps for TC/TE/CR/WR (200 mm/offset =20 mm)

COD. 8000H1098*

- ▶ Piastre di sterzo per TC/TE/CR/WR (200 mm/offset =25 mm)
Tripleclamps for TC/TE/CR/WR (200 mm/offset =25 mm)

*Applicabile solo a forcelle Marzocchi Ø 50 mm
Apply only on Marzocchi Ø 50 mm front forks

MY 06/07/08/09: TC serie/models
MY 08/09: TE serie/models
MY 09: WR 125
MY 10: TE310

CROSS ENDURO



TC/TE/TXC/WR/CR

COD. 8000H2699

- ▶ Kit piastre sterzo con offset regolabile 200/25-15 per forcelle D48 Kayaba
Tripleclamps with adjustable offset 200/25-15 for D48 front forks Kayaba

MY 10/11:	
TC450	TE/TC/TXC250
TE450/510	WR125
WR250/300	TE/TC/TXC449
CR125	TE/TXC511

CROSS ENDURO



SMR-SMRR

COD. 8000H1089*

- ▶ Piastre di sterzo per SMR/SMRR (205 mm/offset =15 mm)
Tripleclamps for SMR/SMRR (205 mm/offset =15 mm)

COD. 8000H1090*

- ▶ Piastre di sterzo per SMR (205 mm/offset =20 mm)
Tripleclamps for SMR (205 mm/offset =20 mm)

*Applicabile solo a forcelle Marzocchi Ø 50 mm
Apply only on Marzocchi Ø 50 mm front forks

MY 06/07/08/09/10
MY 11: SMR449/511

MOTARD



TC/TE/TXC

COD. 8000H2708*

- ▶ Kit ovaloidi per offset 20 mm - Ovalas kit for offset 20 mm
- ▶ **COD. 8000H2711***
- ▶ Kit ovaloidi offset 20 mm + -1°
Ovals kit with 20 mm offset and adjustable angle + -1°

*Montabile solo su piastra Codice 8000H2699
Combined with triple clamps Code 8000H2699

**CHASSIS
KIT**

TC/TE/CR/WR/SMR
COD. 8000H1102

- ▶ Morsetti manubrio per piastre kit in Ergal (TC/TE/CR/WR/SMR)
Handlebar clamp kit for Ergal CNC tripleclamps (TC/TE/CR/WR/SMR)
Abbinabile solo con piastre/Combined with tripleclamps:
COD. 8000H1094 - COD. 8000H1098
COD. 8000H1089 - COD. 8000H1090

**CROSS
ENDURO
MOTARD**MY 08/09
Escluso/Excluded: TE610/SM610**TC/TE/CR/WR/SMR**
COD. 8000H1103

- ▶ Morsetti manubrio per piastre (TC/TE/CR/WR/SMR)
Handlebar clamp kit for tripleclamps (TC/TE/CR/WR/SMR)

**CROSS
ENDURO
MOTARD**MY 06/07
Solo con manubrio ø28
Only with handlebar ø28
MY 08/09/10
Per piastre di serie/piastre con manubrio ø28
For STD tripleclamps/tripleclamps with handlebar ø28
Escluso/Excluded: TE610/SM610/SMS125/WRE125**TC/TE/CR/WR**
COD. 8000B0053

- ▶ Pinza freno anteriore racing per TC/TE/CR/WR
Racing front brake caliper for TC/TE/CR/WR

CROSS ENDURO MY 06/07/08/09/10**TC/CR**
COD. 8000H1484

- ▶ Pompa freno anteriore racing per TC/CR
Racing front brake pump for TC/CR

CROSS MY 00/01/02/03/04/05/06/07/09/10

KIT CICLISTICA



ALL RANGE (NO 449/511) COD. 8000B1371

- ▶ Tappo serbatoio in Ergal
Ergal fuel tank cap

CROSS
ENDURO MOTARD

MY 05/06/07/08/09/10/11



ALL RANGE (NO 449/511) COD. 8000H2448

- ▶ Tappo serbatoio in Ergal
Ergal fuel tank cap

CROSS
ENDURO MOTARD

MY 05/06/07/08/09/10/11



SMR/TE/TXC449-511/TC449 COD. 8000H4068

- ▶ Tappo carico olio
Oil charge cap

CROSS
ENDURO MOTARD

MY 11



SMR/TE/TXC 449-511/TC449 COD. 8000H4069 per/for SMR/TE/TXC449-511 COD. 8000H6446 per/for TC449

- ▶ Tappo serbatoio
Tank cap

CROSS
ENDURO MOTARD

MY 11



SMR/TE/TXC449-511/TC449 COD. 8000H4084

- ▶ Tappo filtro olio carta
Paper cartridge oil filter cap

CROSS
ENDURO MOTARD

MY 11



SMR/TE/TXC449-511/TC449 COD. 8000H5430

- ▶ Tappo scarico olio con magnete
Oil change cap with magnet

CROSS
ENDURO MOTARD

MY 11



SMR/TE/TXC449-511/TC449 COD. 8000H5431

- ▶ Tappo filtro olio a rete
Oil filter cap

CROSS
ENDURO MOTARD

MY 11



ALL RANGE COD. 8000H2447*

- ▶ Tappo olio motore in alluminio con OR
Aluminium engine oil cap with OR
- *Esclusi 610-630 449/511
Excluded 610-630 449/511

CROSS
ENDURO MOTARD

MY 06/07/08/09/
10/11



SMR/TE/TXC449-511/TC449 COD. 8000H5432

- ▶ Tappo tenditore
Distribution chain tensioner

CROSS
ENDURO MOTARD

MY 11

**CHASSIS
KIT**



WR/CR125
COD. 8000H2201

- ▶ Serbatoio maggiorato 8,1L
Fuel tank 8,1L

CROSS ENDURO MY 09



TXC/TC/TE/SMR
COD. 8000H1303*

- ▶ Serbatoio maggiorato 11,5 L (TC/TXC)
Fuel tank 11,5 L (TC/TXC)

COD. 8000H1304*

- ▶ Serbatoio maggiorato 11,5 L (TE/SMR)
Fuel tank 11,5 L (TE/SMR)

*Esclusi TE/TC/TXC 250 MY 10
Excluded TE/TC/TXC 250 MY 10

CROSS ENDURO MOTARD MY 08/09/10



TXC/TE250
COD. 8000H5763

- ▶ Kit serbatoio maggiorato per TXC/TE250 8,5 L
Bigger fuel tank for TXC/TE250 8,5 L

CROSS ENDURO MY 10



TE/TXC449-511/TC449
COD. 8000H6366*

- ▶ Distanziale per ruote chiodate
Spike tyre kit

*Applicabile solo con serbatoio TC449
Apply only combined with fuel tank TC449

CROSS ENDURO MOTARD MY 11



TC/TXC/TE/SMR/WR125/CR125
COD. 8000B1968

- ▶ Sella "step up"
Step up seat
Non applicabile a TE/TXC/SMR449/511/TC449
Do not install it on TE/TXC/SMR449/511/TC449

CROSS
ENDURO MOTARD

MY 08/09/10/11



SMS/TE 630
COD. 8000H3527

- ▶ Sella doppia ribassata 30 mm STD
Double seat 30 mm (STD) lower

DUAL MOTARD

MY 11



TC/TXC/TE/SMR/WR125/CR125
COD. 8000H2442

- ▶ Sella bassa -35 mm std
Lowered seat std -35 mm
Non applicabile a TE/TXC/SMR449/511/TC449
Do not install it on TE/TXC/SMR449/511/TC449

CROSS
ENDURO MOTARD

MY 08/09/10/11



ALL RANGE
COD. 8000H2450*

- ▶ Kit pedane dal pieno altezza std
Light foot-step kit std

COD. 8000H2453*

- ▶ Kit pedane dal pieno std -5 mm
Light foot-step kit std -5 mm

*Esclusi TE/SMS630 - TE/SM610
Excluded TE/SMS630 - TE/SM610

CROSS
ENDURO MOTARD

MY 09/10/11



ALL RANGE
COD. 8000H6445*

- ▶ Manubrio Racing WRP Ø28
Handlebar Racing WRP Ø28

*Solo per morsetti ø28
Only for handlebar clamp ø28

CROSS
ENDURO MOTARD

MY 08/09/10/11



ALL RANGE

COD. 8000H1426 (Z=42) - COD. 8000H1427 (Z=43)
COD. 8000H1429 (Z=44) - COD. 8000H1430 (Z=45)
COD. 8000H1431 (Z=47) - COD. 8000H1433 (Z=49)
COD. 8000H1434 (Z=50) - COD. 8000H1435 (Z=51)
COD. 8000H5934 (Z=53)

- ▶ Corona acciaio/alluminio rosso
Rear sprocket steel/aluminium red

CROSS
ENDURO MOTARD

MY 00/01/02/03/04/05/06/07/08/09/10/11



SMR/TE/TXC449-511/TC449
COD. 7714722

- ▶ Pignone Z=14
Pinion Z=14

CROSS
ENDURO MOTARD

MY 11



SMR/TE/TXC449-511/TC449
COD. 7714723

- ▶ Pignone Z=13
Pinion Z=13

CROSS
ENDURO MOTARD

MY 11



TC/TXC/TE/SMR/WR125

COD. 8000H2213

- ▶ Catena rossa con O.R. (520 - 120L)
Red o-ring chain (520 - 120L)

COD. 8000H1282

- ▶ Catena rossa (520 - 120L)
Red chain (520 - 120L)

CROSS
ENDURO MOTARD

MY 08/09/10/11

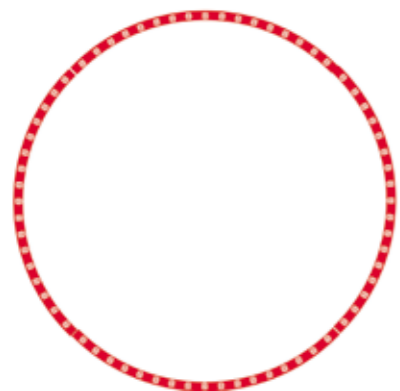


TC/TXC/TE/SMR/WR125/CR125
COD. 8000H1407*

- ▶ Copertina sella antiscivolo montabile su sella o doppio step
Anti slide seat cover available for single seat or double seat
- *Non applicabile a TE/TXC/SMR 449-511 e TC449
Don't install it on TE/TXC/SMR 449-511 and TC449

CROSS
ENDURO MOTARD

MY 08/09/10/11



ALL RANGE
COD. 8000H1409

- ▶ Adesivi per cerchi
(Applicabili solo su cerchi da 18" e 21")
Rims stickers kit
(Suitable only for 18" and 21" rims)

CROSS
ENDURO MOTARD

ALL MY



SMR/SMRR/SMS/TE/WRE
COD. 8000H2048

- ▶ Kit paramani: SMS125/WRE125 e tutti i manubri ø22
Handguard Kit: SMS125/WRE125 and all handlebar ø22
- COD. 8000A3630**
- ▶ Kit paramani: SMRR450/530 e tutti i manubri ø28
Handguard Kit: SMRR450/530 and all handlebar ø28

CROSS
ENDURO MOTARD

COD. 8000H3342

- ▶ Kit paramani
Handguard Kit

CROSS ENDURO

MY 09/10/11: TE/TC/TXC250
MY 11: TC449/TE310

TE/SMS630
COD. 8000H4089

- ▶ Kit paramani
Handguard Kit

DUAL MOTARD

MY 11



TE/TXC449-511/TC449
COD. 8000H4062

- Precarico molla variabile per sospensioni posteriori Kayaba
Variable preload rear suspension
only for Kayaba rear suspension

CROSS ENDURO MY 11



TXC/TC/CR
COD. 8000H4099

- Kit gancio partenza Kayaba
Lanch controll for Kayaba suspension

CROSS ENDURO MY 09/10/11



SMR/TE/TXC449-511/TC449
COD. 8000H4066

- Kit ammortizzatore di sterzo rotativo
Rotative steering dumper kit

CROSS ENDURO MOTARD MY 11



COD. 8000H5425*

- Leva frizione snodata
Unbrakeable clutch lever

COD. 8000H4100*

- Leva freno anteriore snodata
Front unbrakeable brake lever

*Solo per pompa freno e frizione Brembo
Only for brake and clutch Brembo pumps

CROSS ENDURO MOTARD MY 10/11



COD. 8000H3171

- Leva comando starter
(per pompa frizione 8000H2101)
C&C Starting lever
(only for clutch pump 8000H2101)

CROSS ENDURO MY 10/11: TXC/TE250
MY 11: TE310



ALL RANGE
COD. HMABP7AUO**

- Protezione manubrio
Handle bar protector

**Non applicabile a TE/TXC/SMR 449-511 e TC449
Not suitable for TE/TXC/SMR 449-511 and TC449

CROSS ENDURO MOTARD ALL MY


SMS/TE630
COD. 8000H4207

- ▶ Supporto per GPS
GPS support

DUAL MOTARD

MY 11


SMS/TE630
COD. 8000H4205

- ▶ Castello portaborsa posteriore
Rear bag support

DUAL MOTARD

MY 11

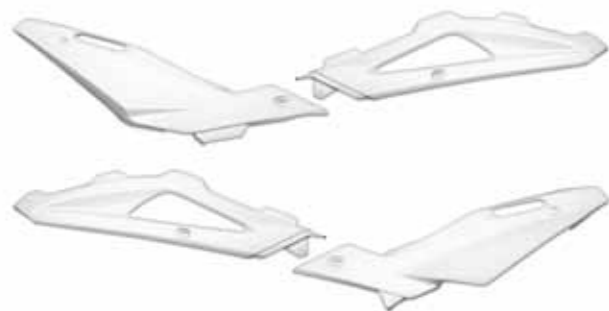

SMS/TE630
COD. 8000H4212

- ▶ Borsa posteriore
Rear bag

DUAL MOTARD

MY 11

KIT CICLISTICA



CODE 8000H2996*
CODE 8000H3001**

- ▶ Plastiche bianche
White plastic

*MY 10/11: TE/TC/TXC250
MY 11: TE310
**MY 09/10: TC/TE/SMR/450-510/TE310
MY 09: TE/TXC250

CROSS
ENDURO MOTARD



SMR/TE/TXC449-511/TC449
COD. 8000H5933

- ▶ Kit plastiche bianche
White plastic kit

CROSS
ENDURO MOTARD MY 11



SMS/WRE
COD. HMGRSM09

- ▶ Kit adesivi replica per SMS/WRE
Replica graphic Kit for SMS/WRE

DUAL MOTARD

MY 07/08/09/10



TC/TE/TXC
COD. HMGRTC25009-1*

- ▶ Kit adesivi replica TC 250
Replica graphic kit TC 250

COD. HMGRTC25009-2**

- Kit adesivi replica TC 250
Replica graphic kit TC 250

*MY 10/11: TC/TE/TXC250
MY 11: TE310

**MY 09/10: TC/TXC 450 TE310/450/510
MY 09: TC/TXC510 e/and TE250/310

CROSS ENDURO



TE
COD. 8000H5427*

- ▶ Kit adesivi replica Enduro
Enduro Replica graphic Kit

*Esclusi TE250 MY 10 - Excluded TE250 MY 10

ENDURO

MY 08/09/10

CHASSIS KIT

KIT CICLISTICA



SMR COD. HMGRSMR09

- ▶ Kit adesivi replica SMR
Replica graphic Kit SMR

MOTARD

MY 09/10



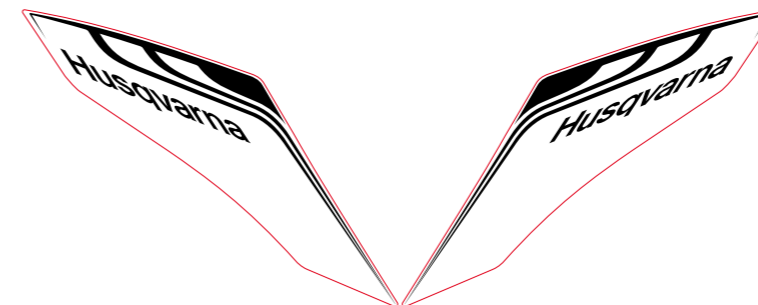
TC/TE/TXC250 TE310 COD. HMGKTC250*

- ▶ Grafiche Special Parts
Special Parts graphic

*Utilizzabile solo con plastiche bianche Codice 8000H2996
Apply on white plastic kit Code 8000H2996

CROSS ENDURO

MY 10/11: TE/TC/TXC250
MY 11: TE310



SMR/TE/TXC449-511/TC449 COD. 8000H6559

- ▶ Grafiche Special Parts 449-511
Special Parts graphic 449-511

CROSS
ENDURO MOTARD

MY 11



TE COD. 8000H5426

- ▶ Grafiche Meo Replica
Meo Replica graphic

*Utilizzabile solo con plastiche bianche Codice 8000H2996
Apply on white plastic kit Code 8000H2996

ENDURO

MY 10/11: TE250
MY 11: TE310

CHASSIS KIT



TC/TXC/TE
COD. 8000H3170*
COD. 8000H2438**

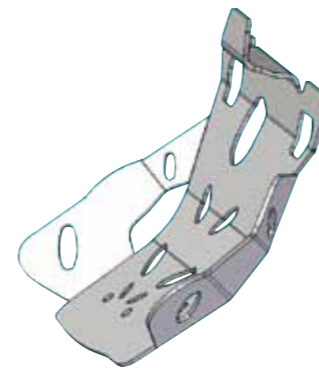
- ▶ Paramotore in alluminio
Aluminium skid plate

*MY 10: TC250

**MY 10: TE/TXC250

MY 11: TC/TE/TXC250; TE310

CROSS ENDURO



WR250/WR300
COD. 8000H1425

- ▶ Paramotore in alluminio
Engine aluminium guard

MY 01/02/03/04/05/06/07

08/09/10/11: WR 250

MY 09/10/11: WR 300

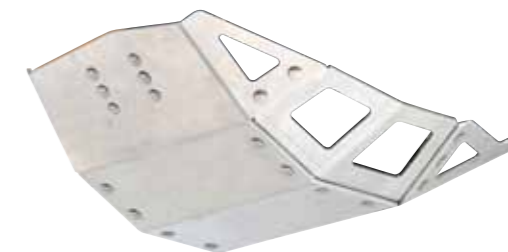
ENDURO

SMS/TE630
COD. 8000H2461

- ▶ Paramotore in alluminio
Aluminium skid plate

DUAL MOTARD

MY 11



TC/TXC/TE
COD. 8000H1424*

- ▶ Paramotore in alluminio (TC/TXC/TE)
Engine aluminium guard (TC/TXC/TE)

*Esclusi TC/TXC/TE250 MY 10

Excluded TC/TXC/TE250 MY 10

CROSS ENDURO

MY 08/09/10



TC/TXC/TE/SMR
COD. 8000H2210 (nero/black)
COD. 8000H2211 (bianco/white)

- ▶ Kit paratelaio
Frame protection kit

CROSS
ENDURO MOTARD

MY 09/10



▶ ***KIT CARBONIO***
CARBON KIT

KIT CARBONIO



SMR/TE/TXC 449/511 TC499 COD. 8000H4064

- ▶ Paramotore in carbonio
Carbon skid plate

CROSS
ENDURO MOTARD

MY 11



COD. 8000H4065*

- ▶ Protezione disco freno anteriore in carbonio
Carbon front disk protector

*Montabile solo su dischi freno $\varnothing \leq 270$ mm
Apply only on front brake disk $\varnothing \leq 270$ mm

MY 08/09/10/11: TE/TC/TXC 250/310/450/510
MY 09/10/11: WR250/300/CR125/WR125
MY 11: TE/TXC 449-511 TC449

CROSS ENDURO

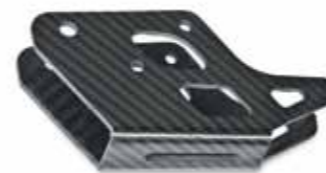


COD. 8000H4082

- ▶ Protezione disco posteriore in carbonio
Carbon rear disk cover kit

MY 08/09/10: TE/TC/TXC/SMR 250
310/450/510/WR/CR125
MY 08/09: SMRR 450/530
MY 11: TE/TXC/SMR449/511/TC449

CROSS
ENDURO MOTARD



COD. 8000H4086

- ▶ Cruna catena in carbonio
Carbon chain slider

MY 05 fino/up to 10: TE/TC/TXC/SMR 250/310/450/510
MY 06 fino/up to 10: WR/CR125
MY 09/10: WR250/300
MY 07 fino/up to 09: TE/SMR610
MY 08/09: SMRR450/530
MY 11: TE/TXC/SMR 449/511 TC449 SMS/TE630
MY 11: TE/TC/TXC250

CROSS
ENDURO MOTARD



TE/TC/TXC/SMR 250/310/450/510 COD. 8000H4094

- ▶ Protezione pignone in carbonio
Carbon pinion protector

CROSS
ENDURO MOTARD

MY 08/09/10
MY 11: TE/TC/TXC250 TE310



TE/TC/TXC 250/310/450/510 COD. 8000H4102

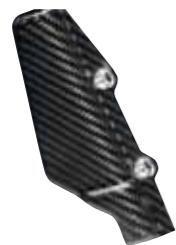
- ▶ Paracalore posteriore carbonio
Carbon rear heat protector

CROSS ENDURO

MY 09/10/11

CARBON KIT

KIT CARBONIO



TE/SMS630
COD. 8000H4206

- ▶ Copertura pompa freno posteriore
Carbon rear brake cover

DUAL MOTARD MY 11



TE/SMS630
COD. 8000H4208

- ▶ Copri pignone in carbonio
Carbon pinion cover

DUAL MOTARD MY 11



TE/SMS630
COD. 8000H4209

- ▶ Paracalore in carbonio per terminali
Carbon Exhaust heat protector

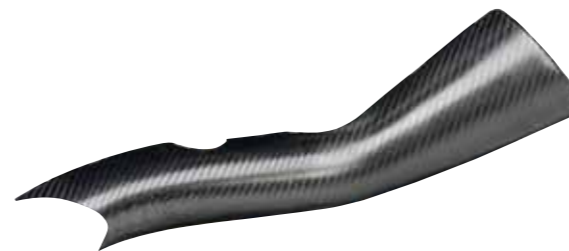
DUAL MOTARD MY 11



TE/SMS630
COD. 8000H4471

- ▶ Paracalore anteriore in carbonio
Carbon front heat protector

DUAL MOTARD MY 11



TE/SMS630
COD. 8000H4057

- ▶ Paracalore centrale in carbonio
Central carbon heat protector

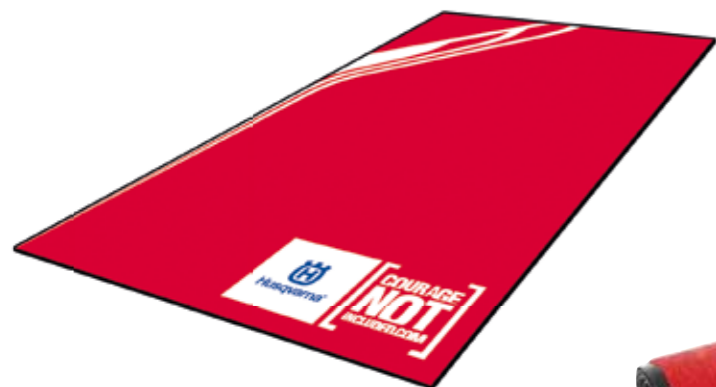
DUAL MOTARD MY 11



▶ **ACCESSORI**
ACCESSORIES

ACCESSORI**COD. HMHCPA00**

- ▶ Tappeto racing 449/511
Racing carpet 449/511

**COD. HMCARPET01**

- ▶ Tappeto racing
Racing carpet

**COD. HMC0BIO1**

- ▶ Telo coprimoto
Protective cover indoor

**COD. 8000H1108**

- ▶ Carica batteria
Battery charger

**COD. 8000A9946**

- ▶ Conta ore motore
Engine hour meter

ACCESSORIES

**COD. HMSTAND**

- ▶ Cavalletto in alluminio
Aluminum stand

**COD. HV004R**

- ▶ Rotolo fettuccia rosso
Red track tape


COD. HMTEXPL1 40 mm
COD. HMTEXPL2 60 mm

- ▶ Tappo per silenziatore
Exhaust silencer plug

**COD. 80A0A9949**

- ▶ Termocoperte
Tyre warmer kit



* Le illustrazioni e le descrizioni riportate nella presente pubblicazione si riferiscono alle informazioni più aggiornate disponibili al momento della stampa.
I dati tecnici e le caratteristiche dei modelli possono essere soggetti, in qualsiasi momento, a modifiche senza obbligo di preavviso.

All the pictures and descriptions in the actual publication refers to the most updated informations available at printing time.
The technical data and model characteristics can be affected to modification, at any time, without any obligation of notice.